

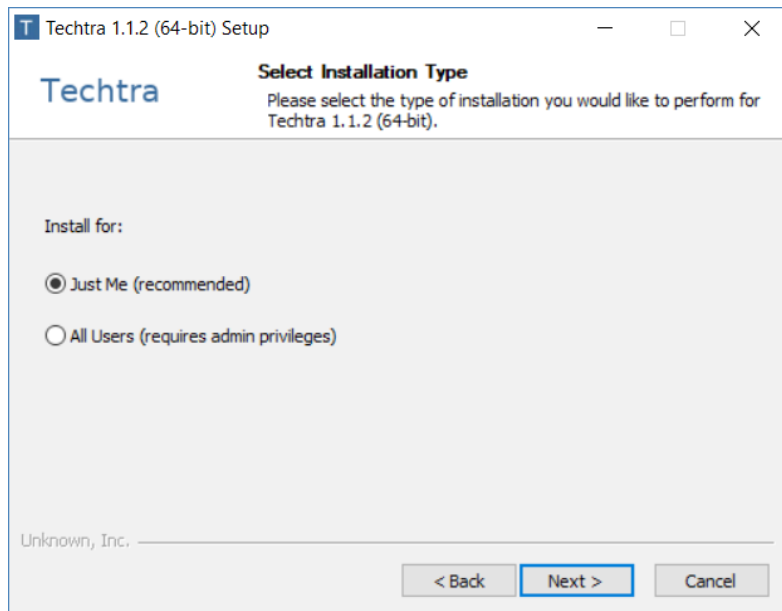
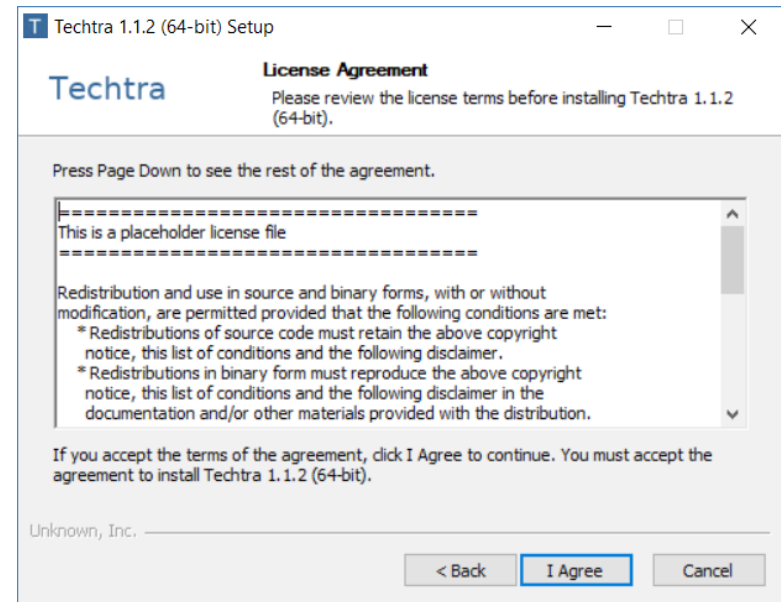
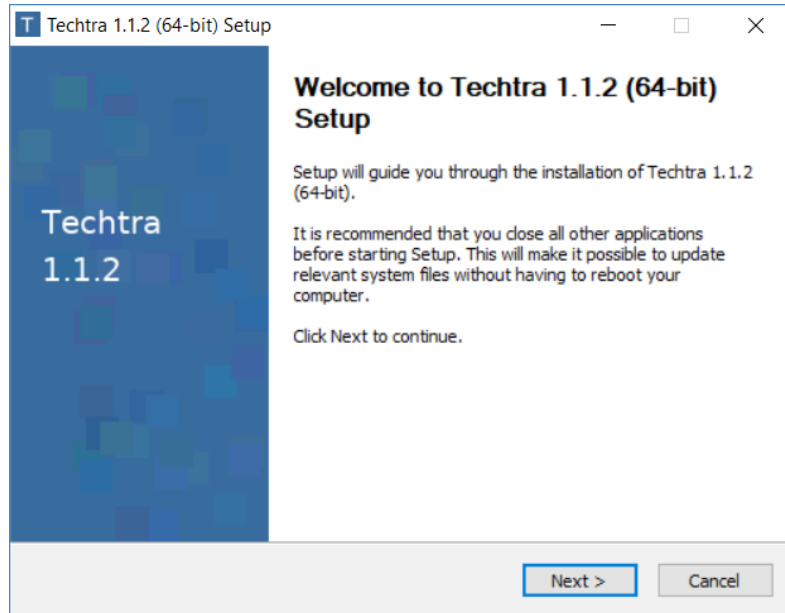
TECHTRA GEM Visualization

V1.1.2

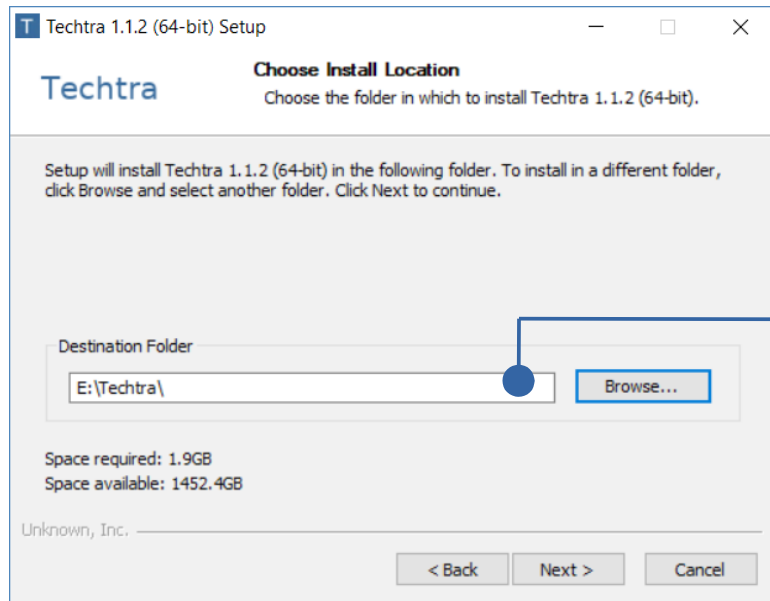
TECHTRA

www.techtra.pl/en

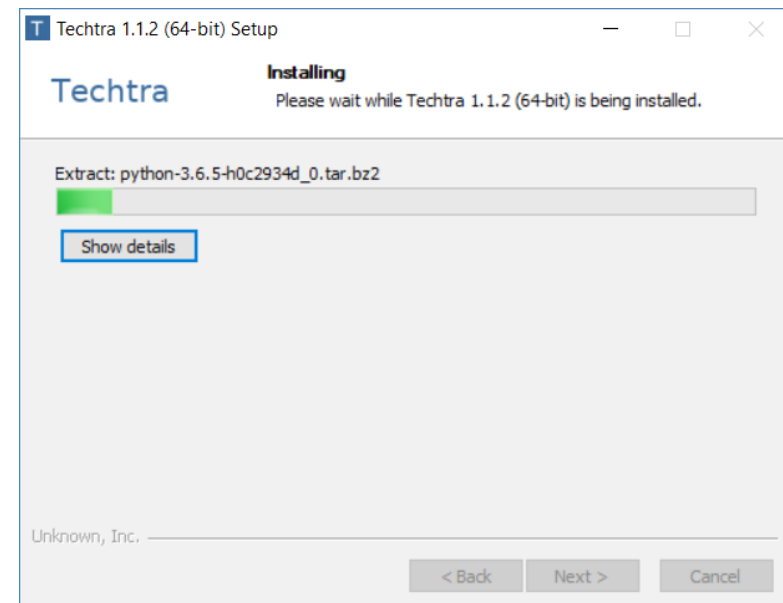
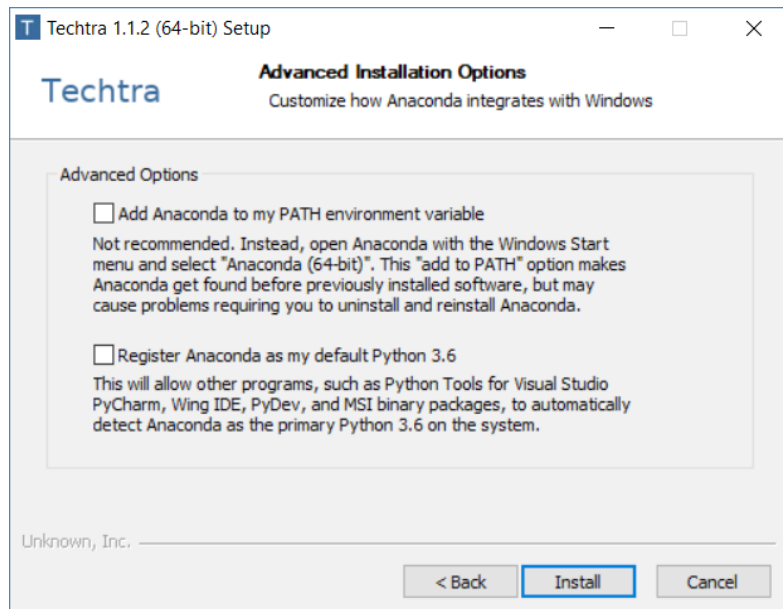
Installation (Windows)



Installation (Windows)

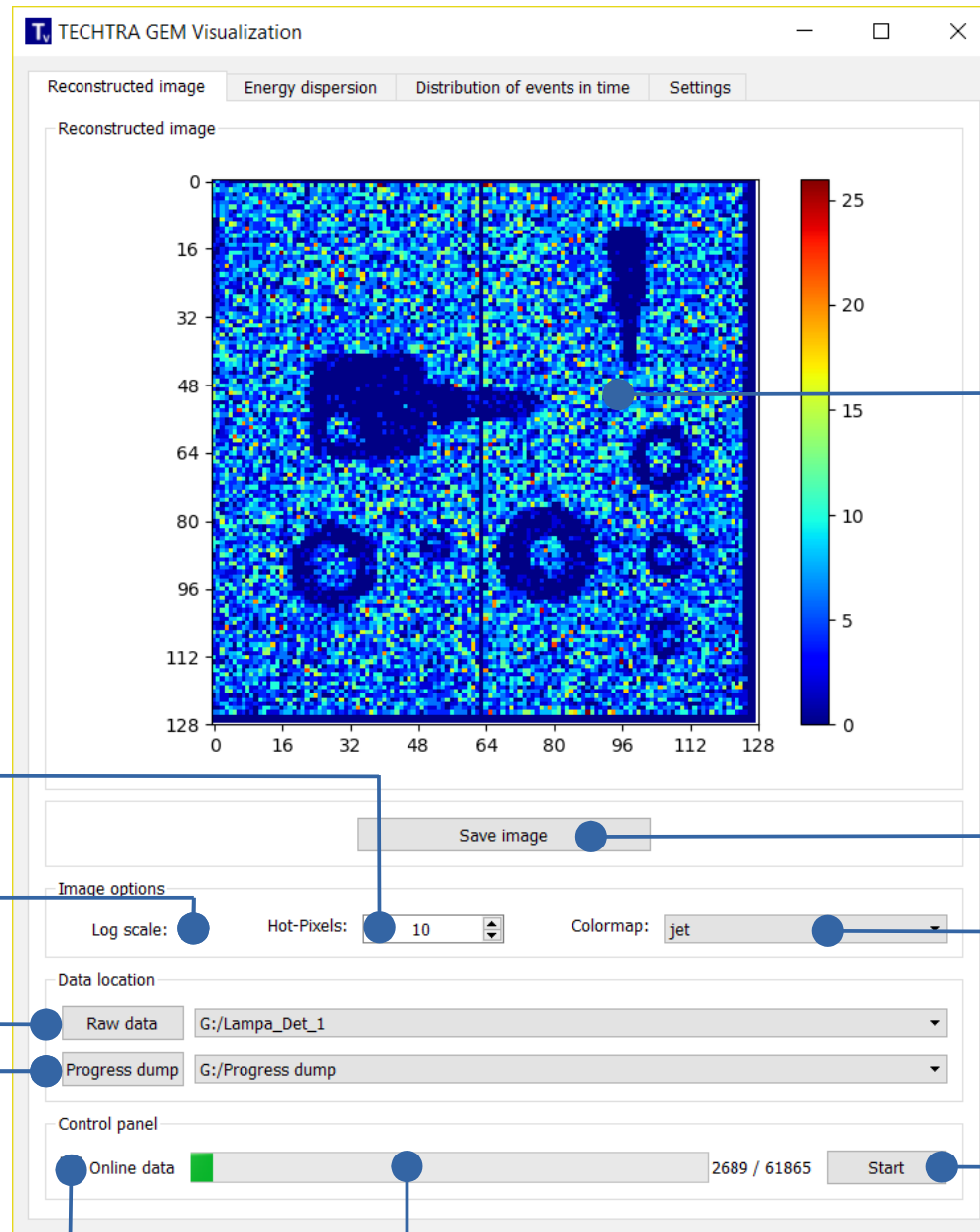


Make sure that the path does not contain spaces. Otherwise, try to find a different location (e.g. C:\Techtra\)



Description of the functions

Reconstructed image



The number of pixels with the highest value to be dropped

Scale the pixel value

Select the path to raw data

Choose a place to store reconstruction progress

Begin reconstruction automatically again after finishing

Reconstructed image

Save reconstructed image to PNG format

Select your favourite color scheme

Start / stop reconstruction

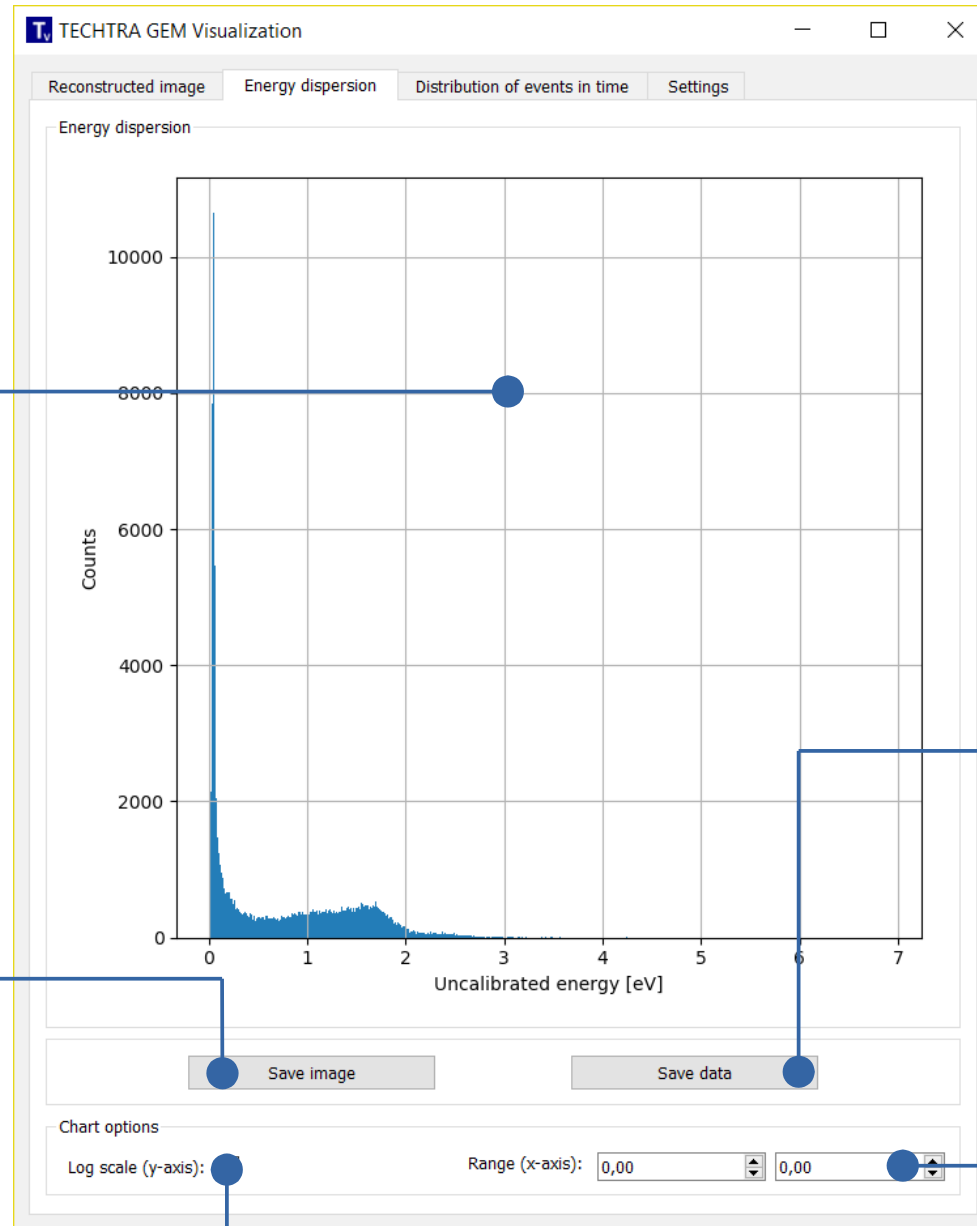
Reconstruction progress

Energy dispersion

Energy dispersion

Save figure to PNG format

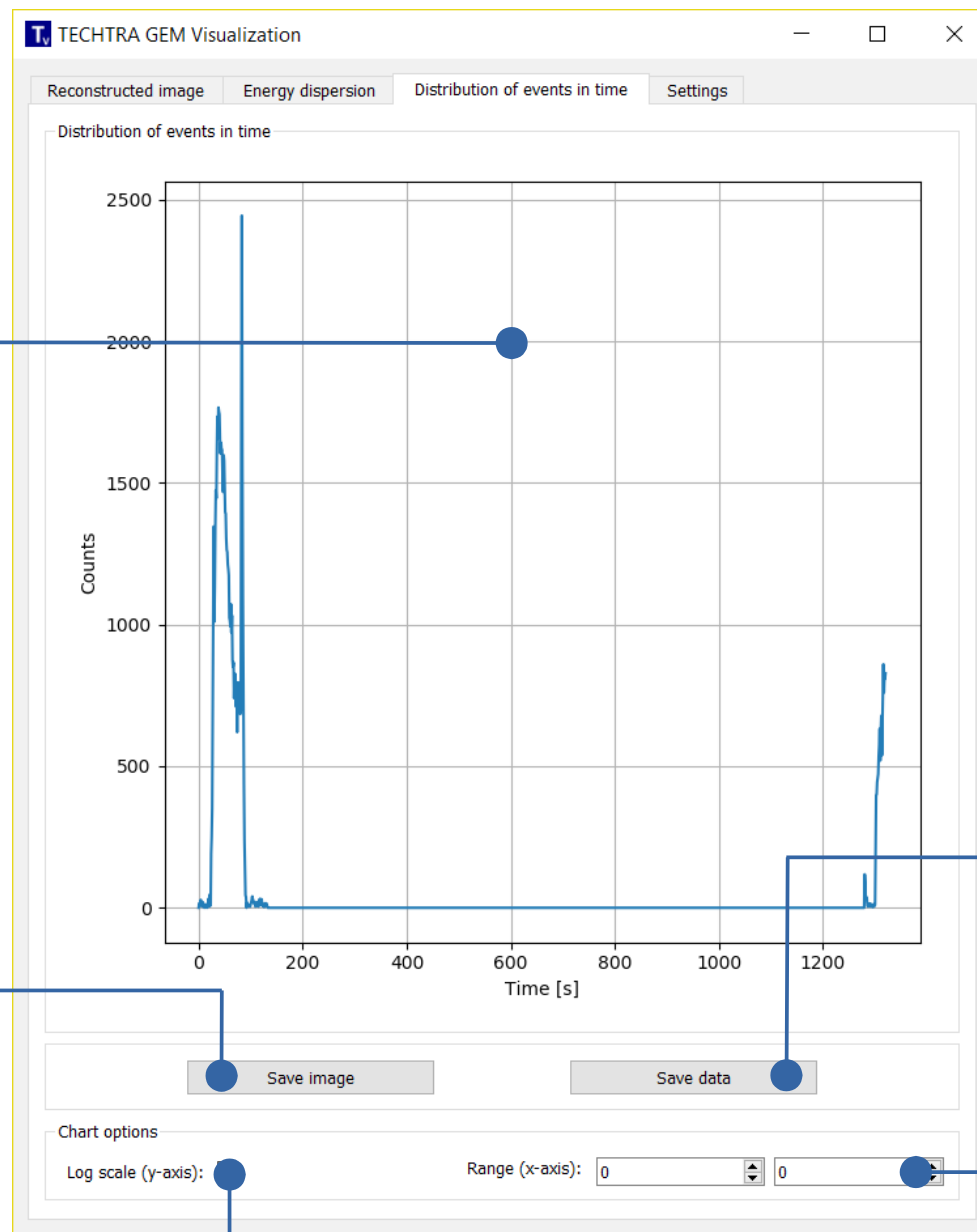
Scale the number of counts



Save the data to the CSV format (energy values)

Range of energy values

Distribution of events in time



Number of events per second

Save the chart to PNG format

Scale the number of events

Save the data to the CSV format (number of seconds, number of events)

Time range

Settings

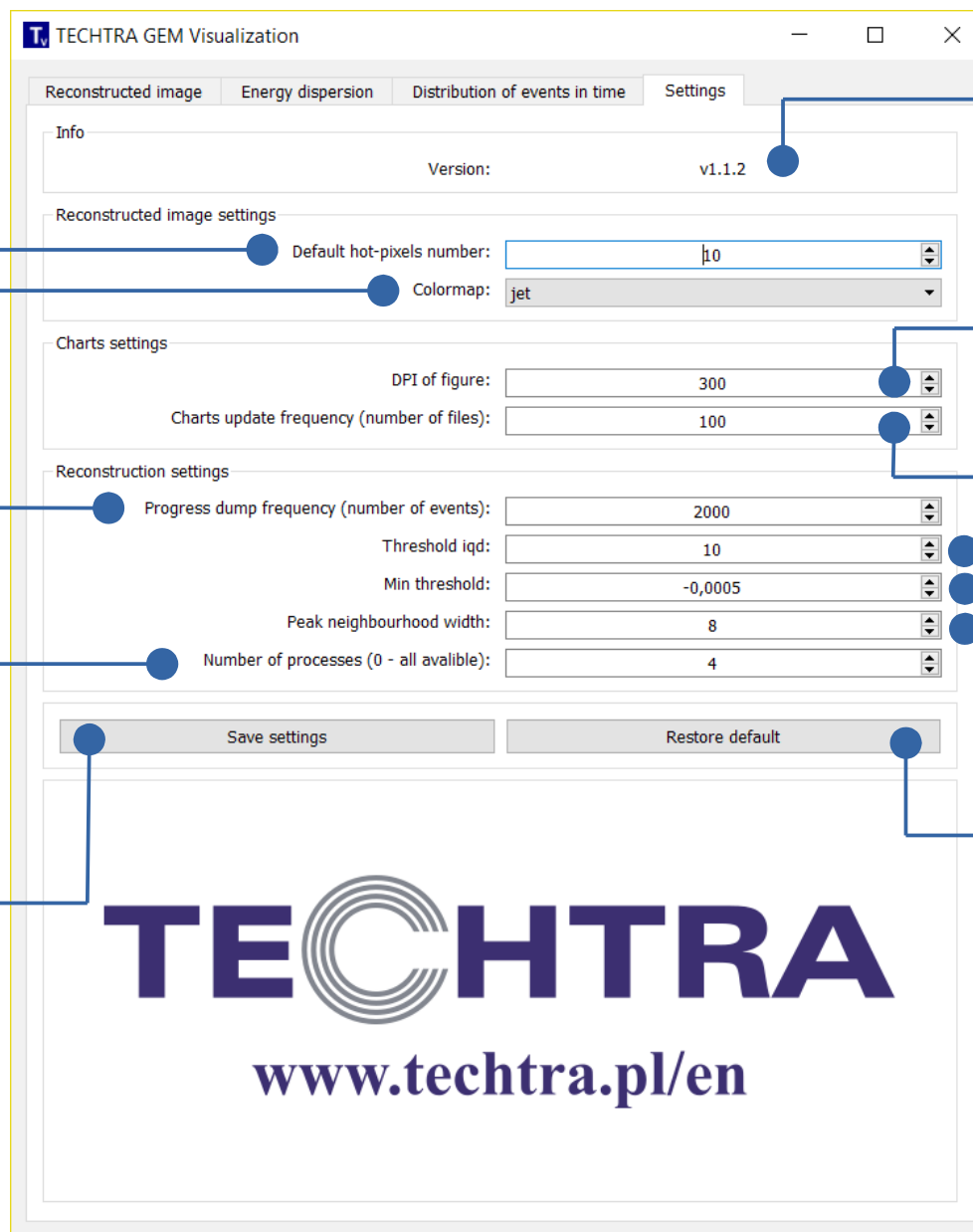
The default number of largest pixels to be cropped

The default color scheme of the reconstructed image

The number of events between progress records (if more processes the value should be higher)

The number of processes used in parallel data processing (more is better, but it is more burdensome to the computer)

Save settings



Version number

Resolution of the saved image (more is better)

The number of files between the chart update

Parameters for image reconstruction

Restore the default settings

TECHTRA
www.techtra.pl/en