

TECHTRA GEM Visualization

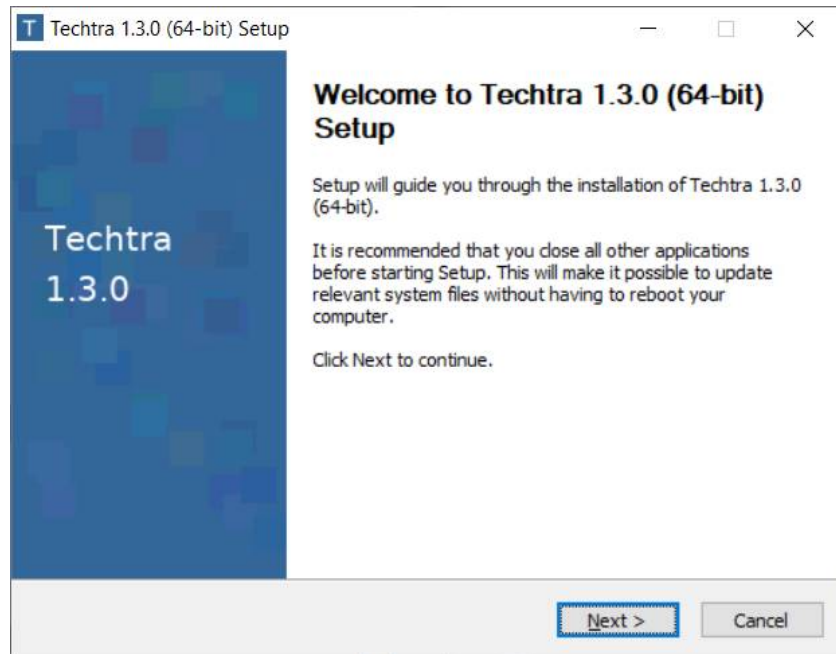
V1.3.0



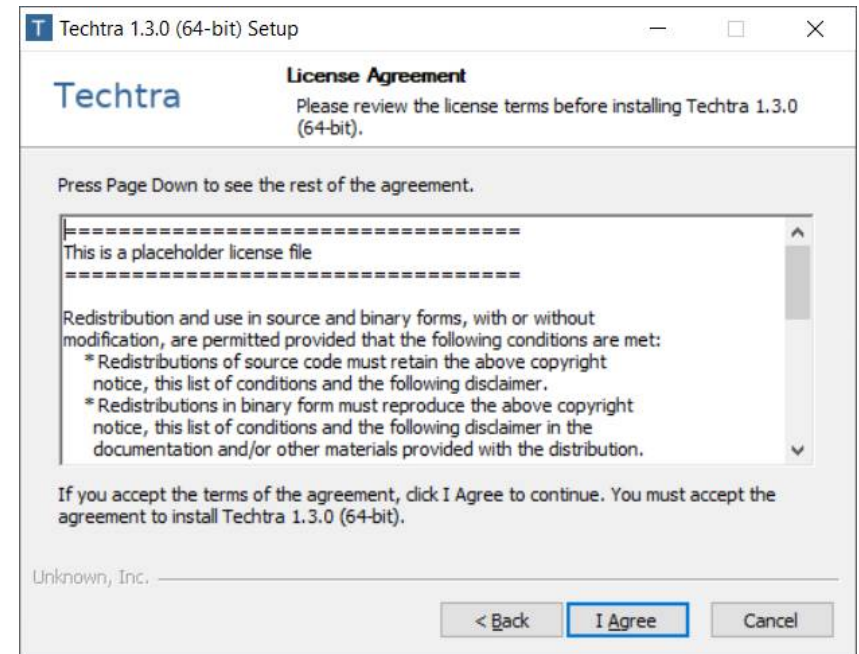
www.techtra.pl/en

Installation (Windows)

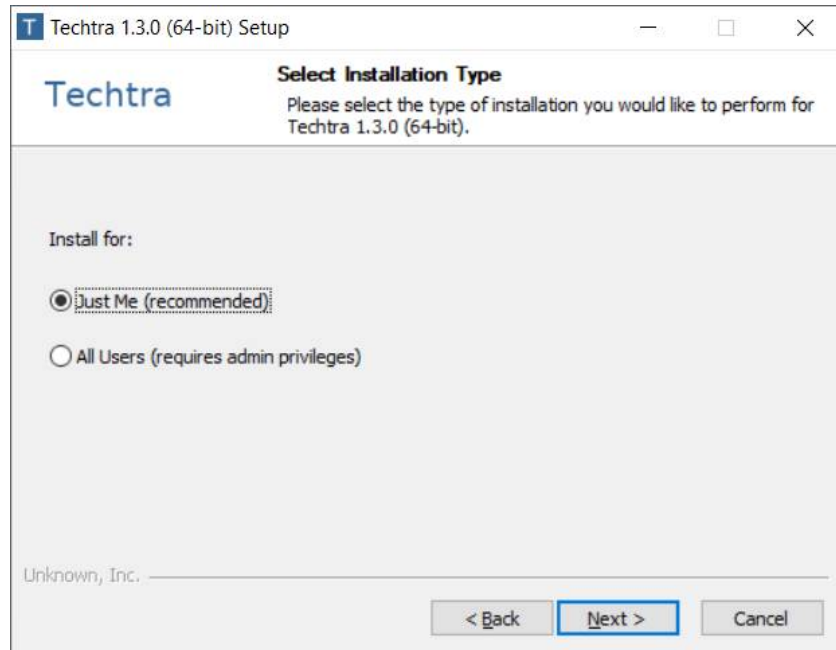
1.



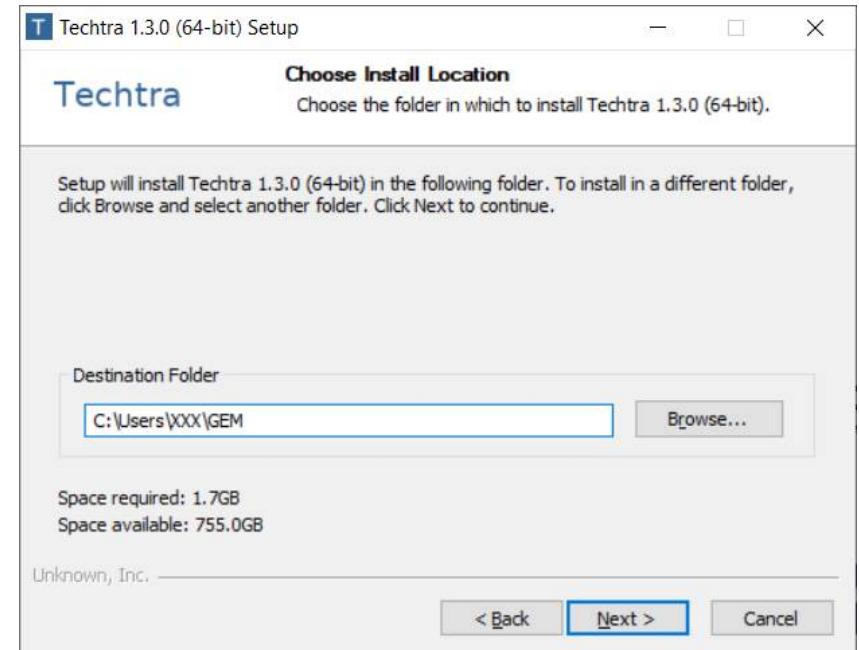
2.



3.

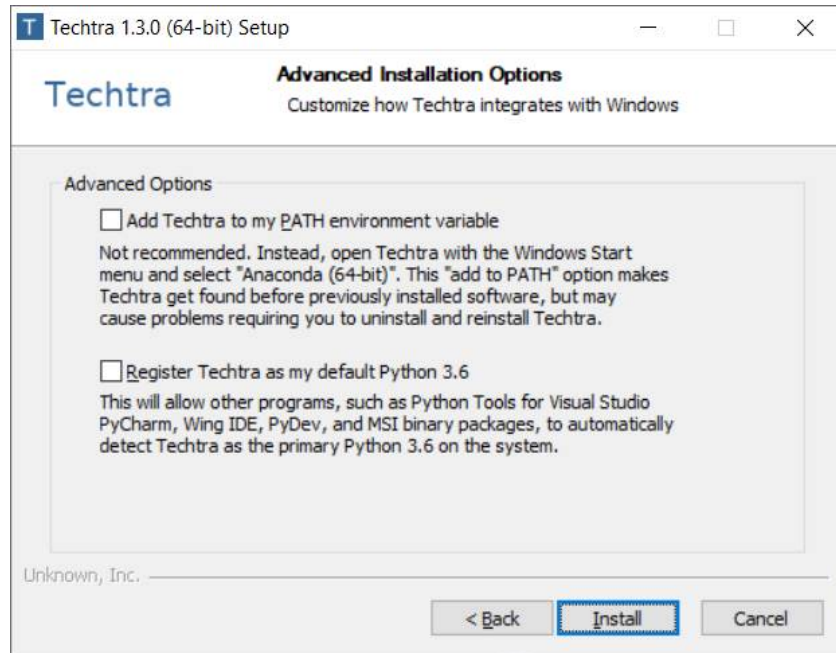


4.

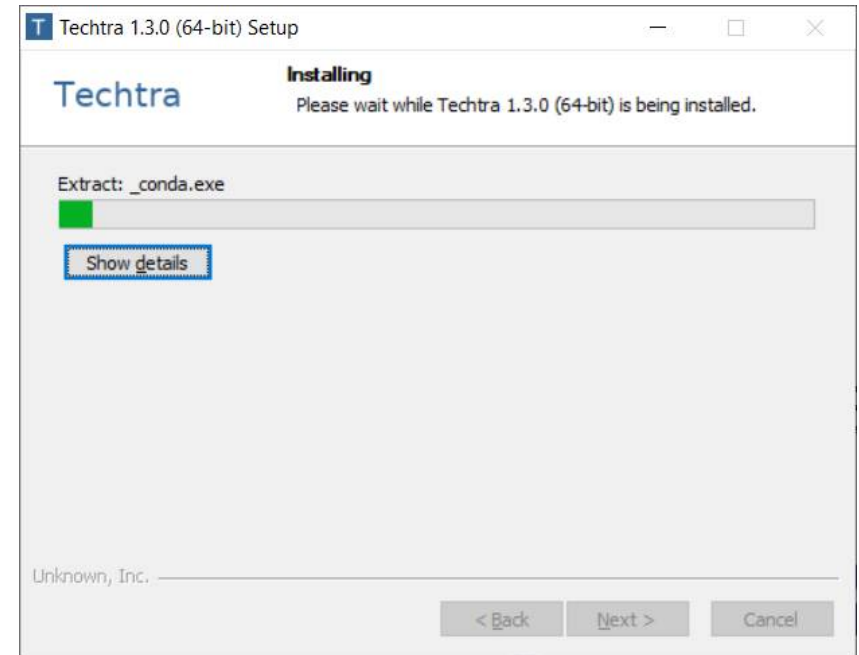


Installation (Windows)

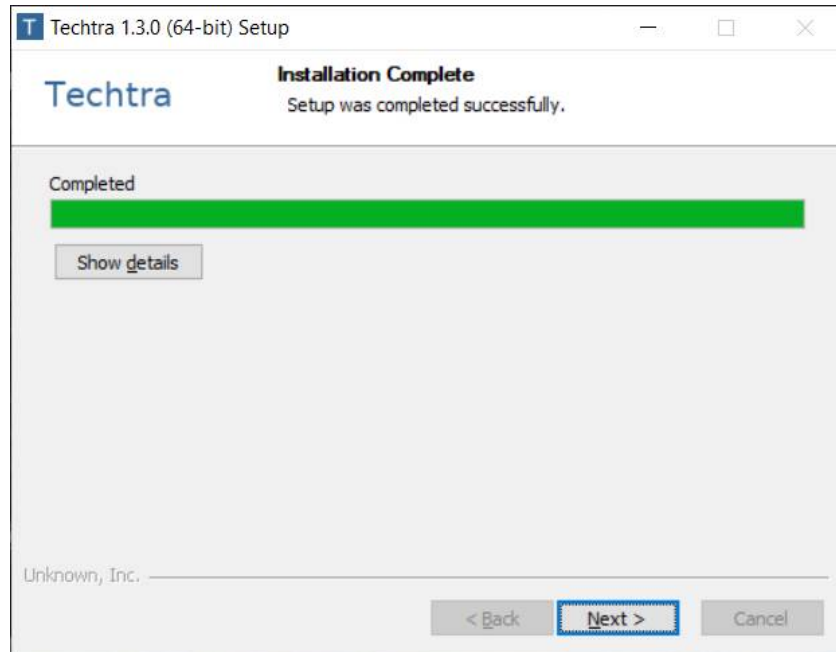
5.



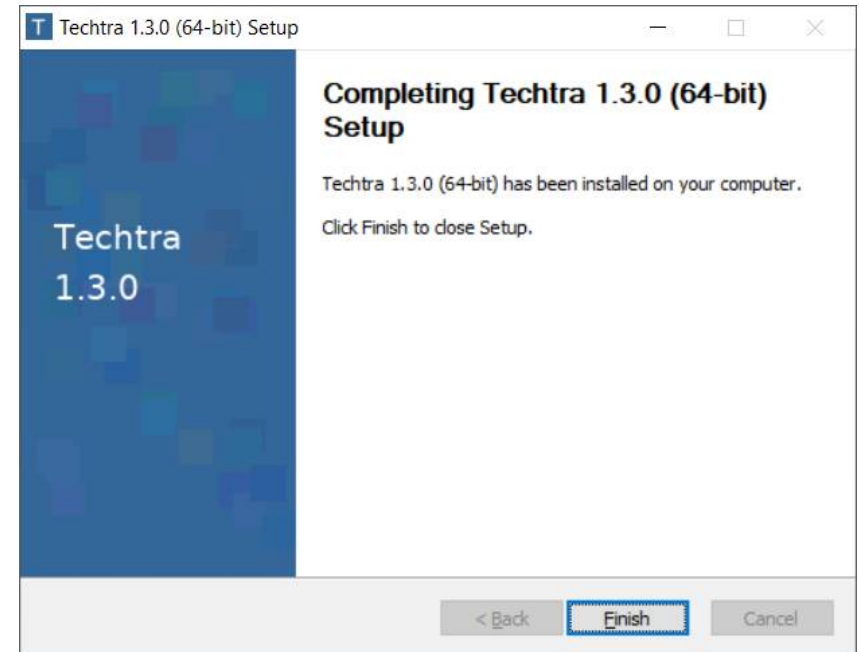
6.



7.

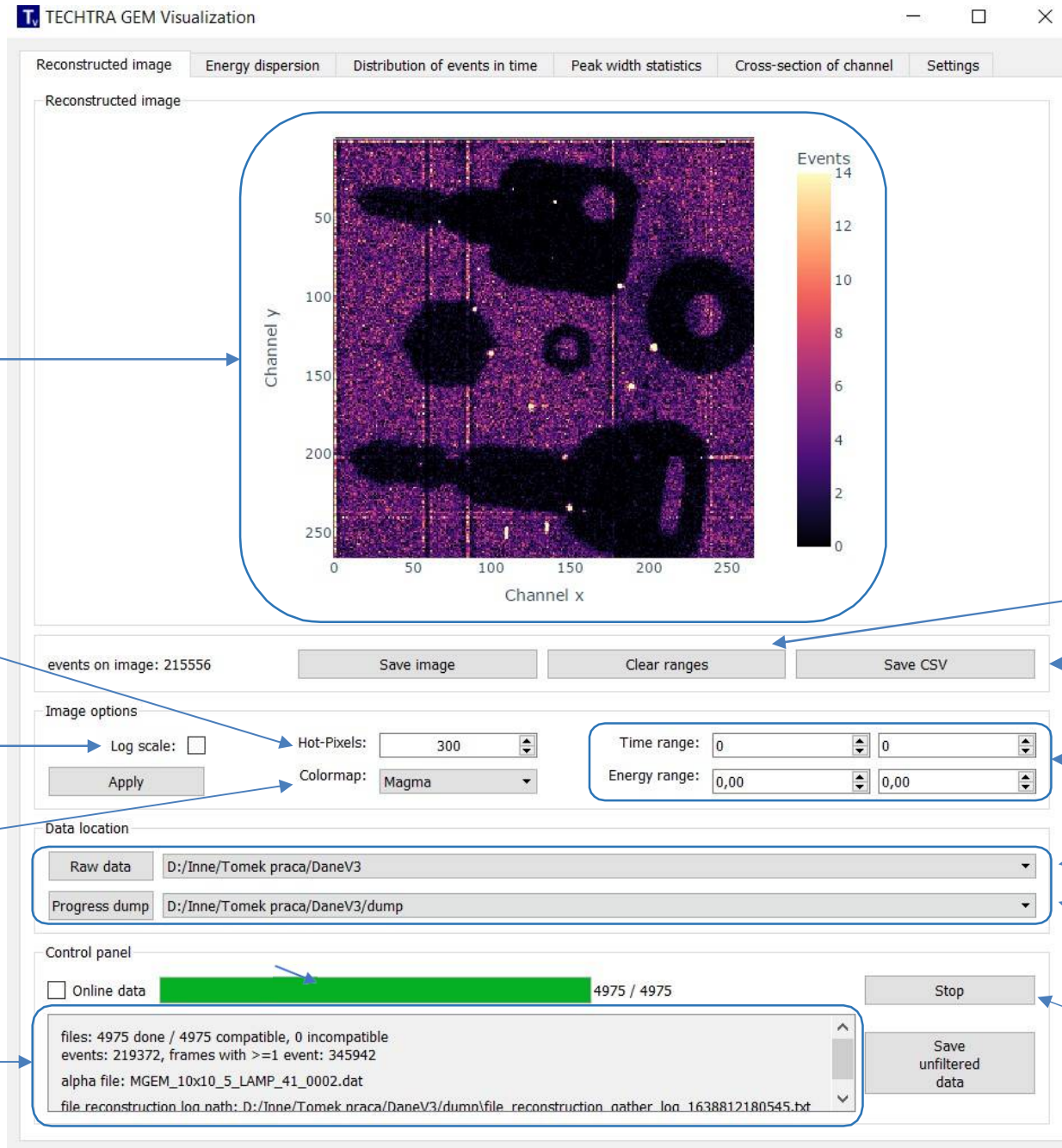


8.

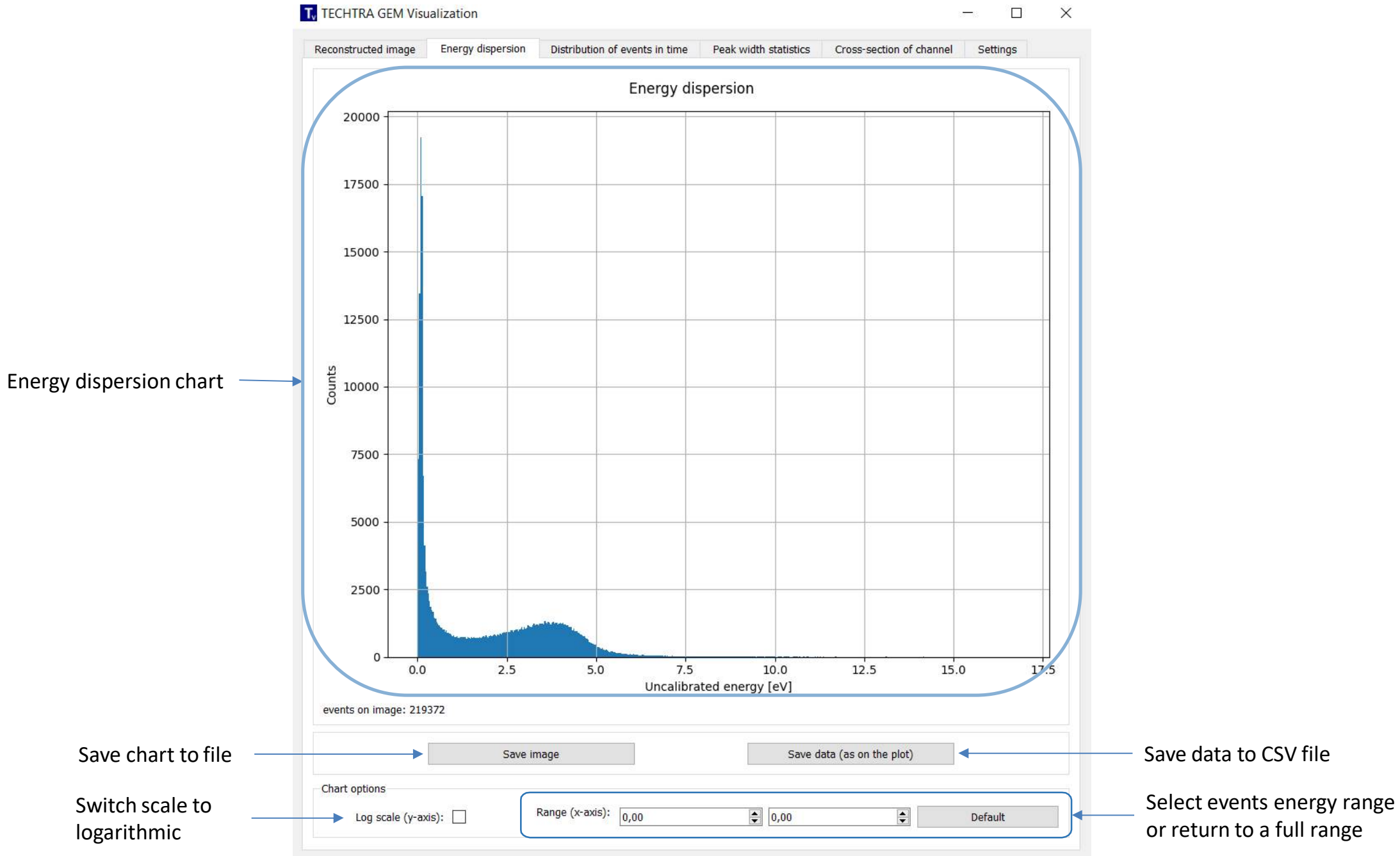


Description of the functions

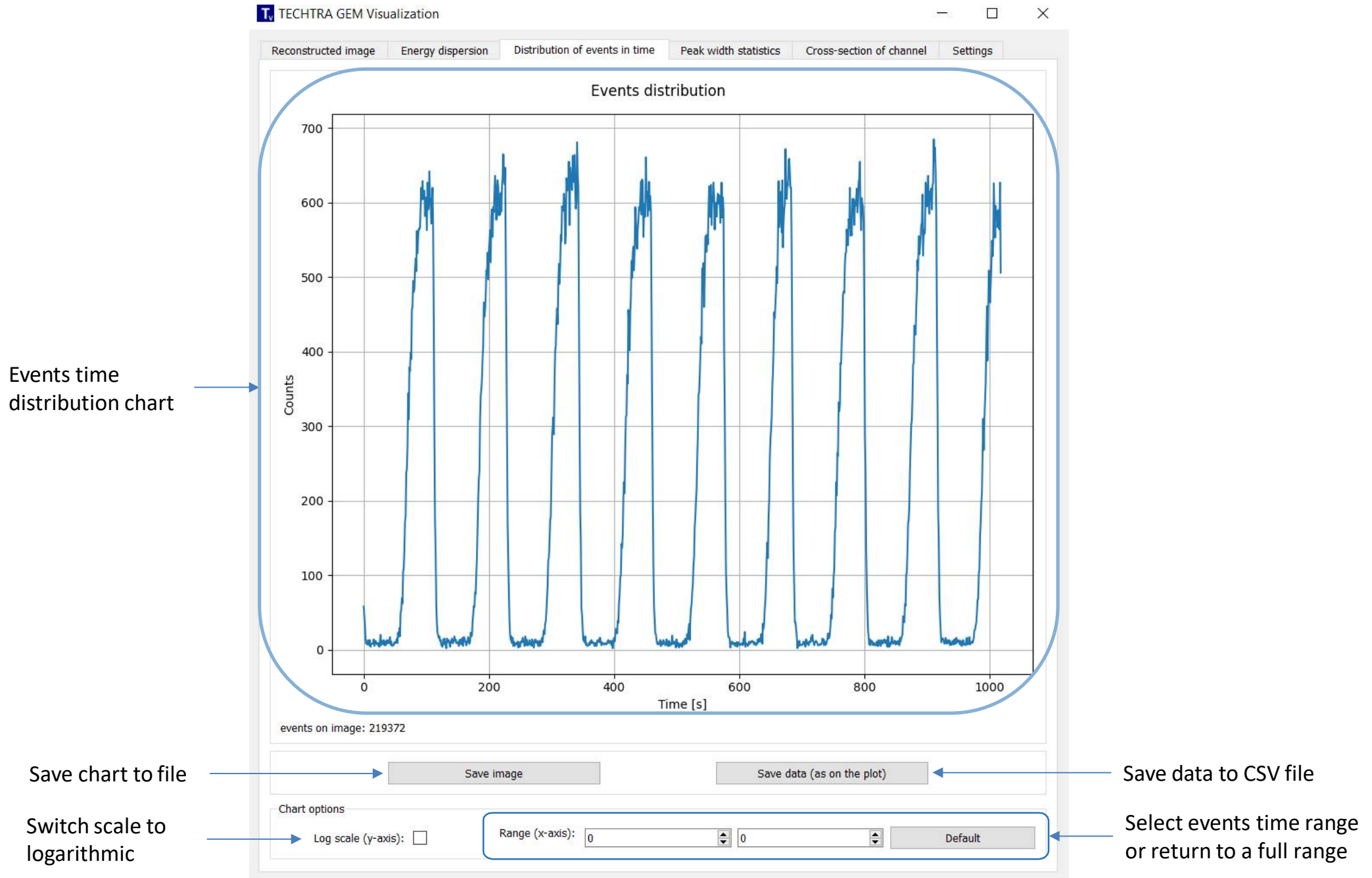
Reconstructed image tab



Energy dispersion tab

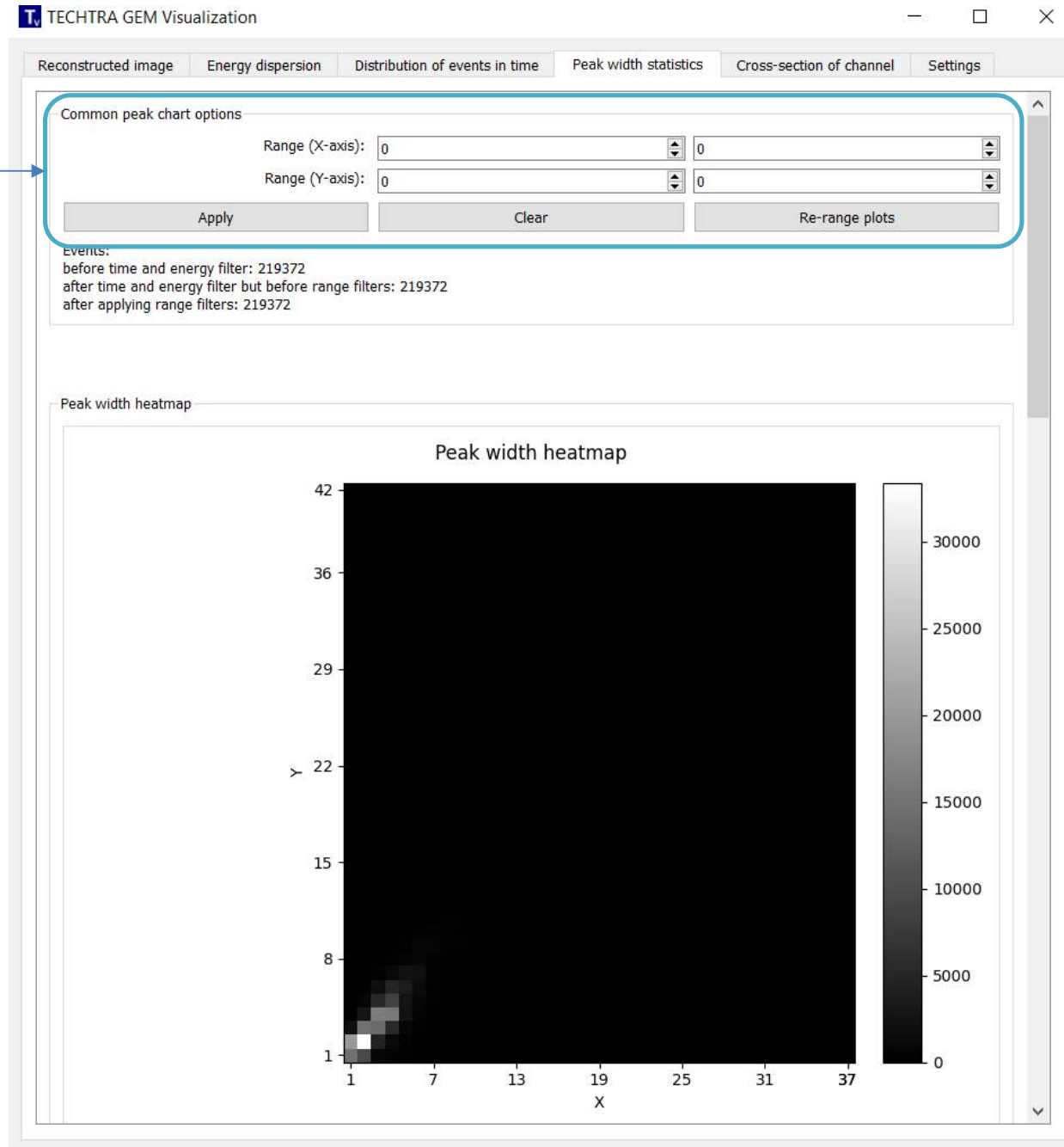


Distribution of events in time tab

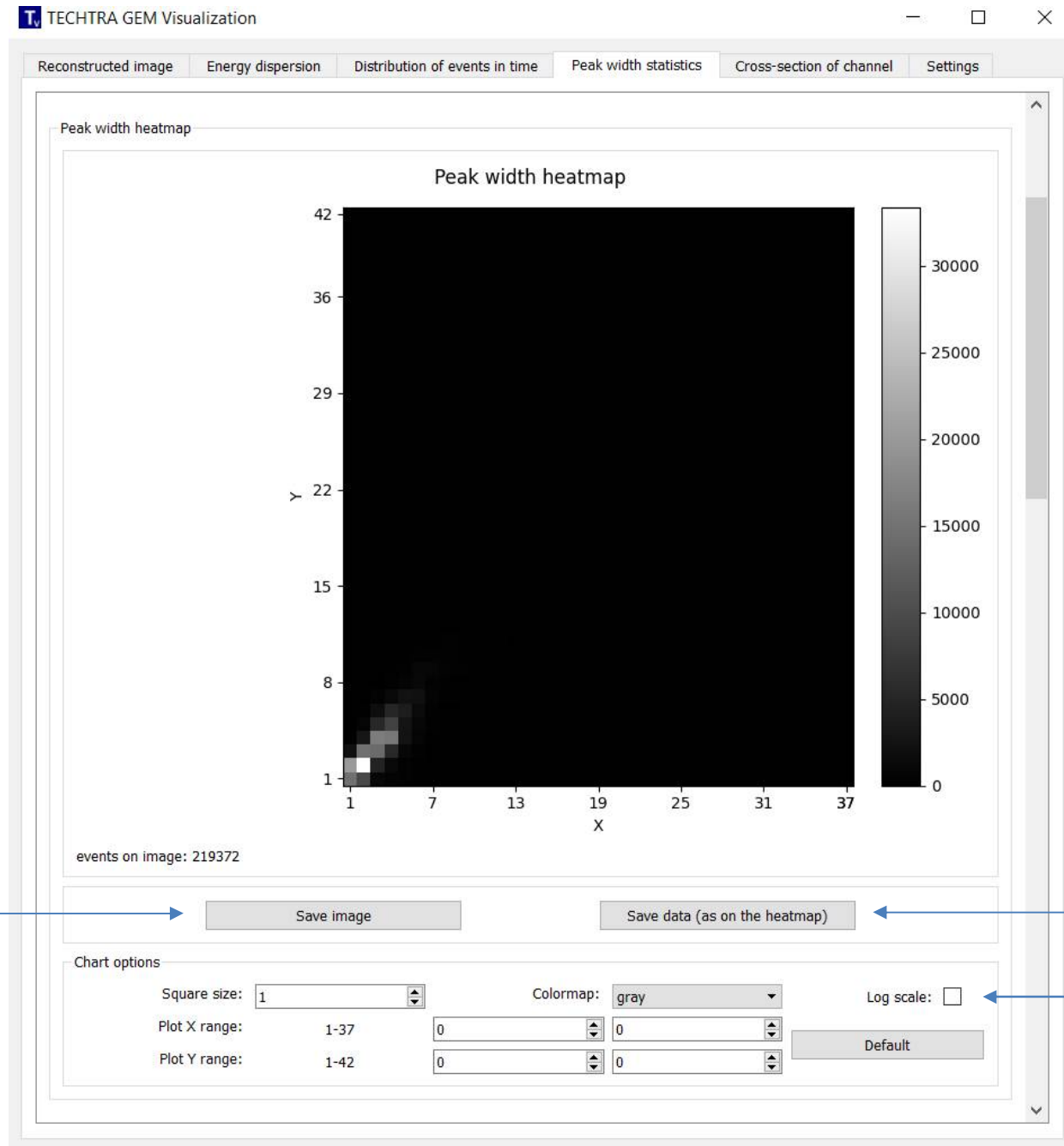


Peak width statistics tab

Select axis range



Peak width statistics tab

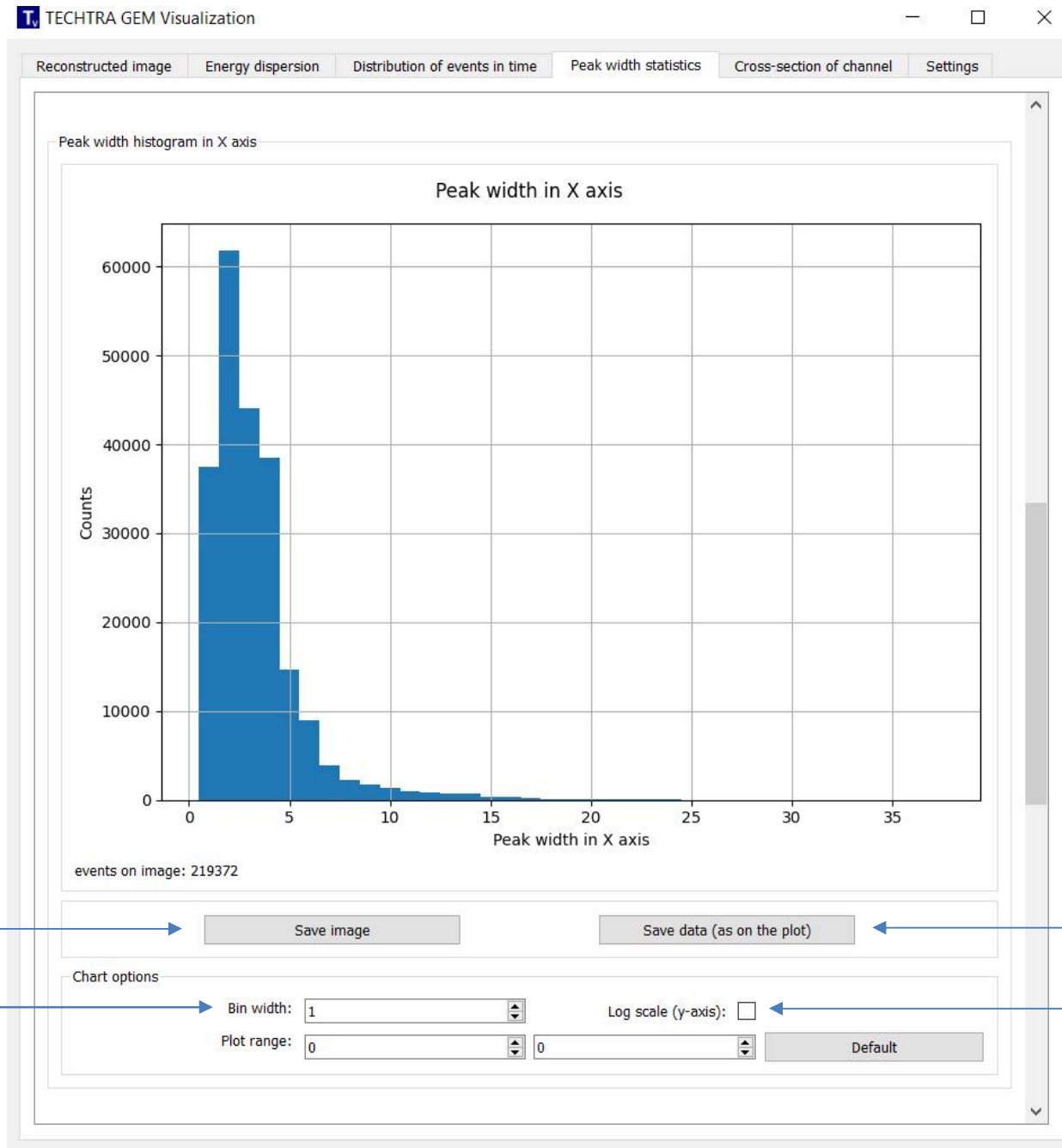


Save chart to file

Save data to CSV file

Switch scale to logarithmic

Peak width statistics tab



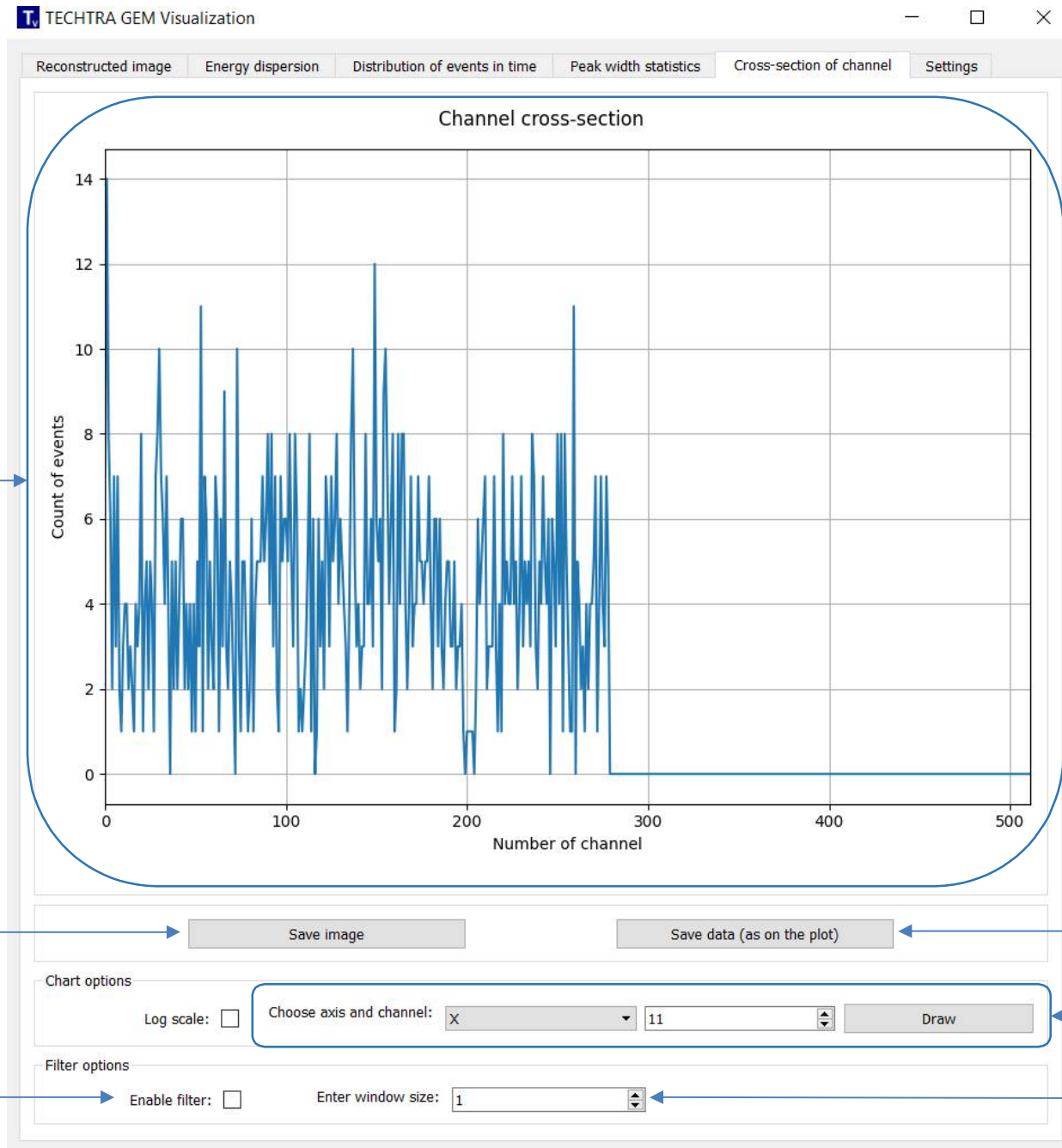
Save chart to file

Select histogram
bin width

Save data to CSV file

Switch scale to logarithmic

Cross-section tab



Cross-section chart

Save chart to file

Save data to CSV file

Select axis and
channel number

Enable gaussian filter

Enter filter's windows size

Settings tab

Default values of image reconstruction settings

TECHTRA GEM Visualization

Reconstructed image | Energy dispersion | Distribution of events in time | Peak width statistics | Cross-section of channel | Settings

Info

Version: v1.3.0

Reconstructed image settings

Default hot-pixels number: 300

Resolution: 512

Colormap: Magma

Charts settings

DPI of figure: 300

Charts update frequency (number of files): 100

Reconstruction settings

Progress dump frequency (number of events): 500

Threshold iqd: 10

Min threshold: -0,0050

Peak neighbourhood width: 8

Number of processes (0 - all available): 4

Settings specific to 'raw data' file formats:

Add zeros to fill data to nearest k*256 channels: ☒

Frames to move events in X axis: 0

Save settings | Restore default

TECHTRA

www.techtra.pl/en

Version of application

Resolution of the saved chart (more is better)

The number of files between the chart update